



## Using the NT CPU TCP/IP Socket Interface

How to configure the NT CPU Socket for Level 2 OAI

---

### Test Environment

Test Programs: OAISYS Net Server 3.0.51  
PC Operating System(s): Windows NT 4.0, Windows 2000, Windows 98  
Phone System Software: Axxess 5.1, NT CPU 5.1  
Phone Hardware: N/A  
Test Date: 03/15/2000

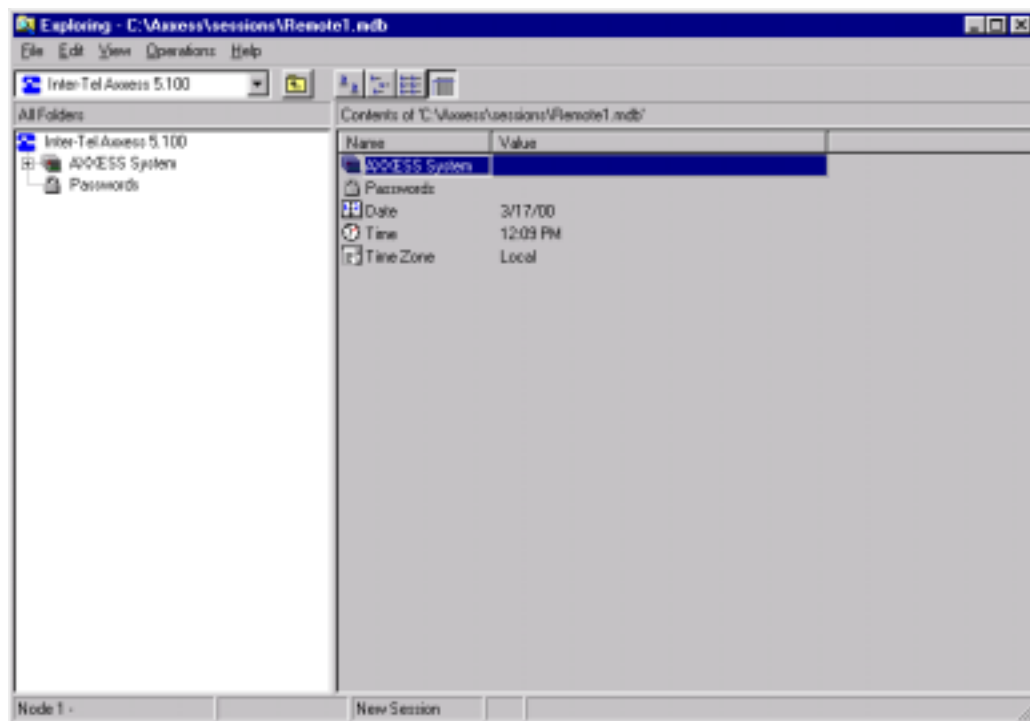
---

### Overview

The Inter-tel NT CPU provides a TCP/IP socket interface for System Level OAI. This interface is much faster than the standard CPU Serial Ports. Any installation with an NT CPU and System Level CTI applications should use TCP/IP sockets for OAI. The CPU Serial ports may be susceptible to a buffer overflow on heavily loaded systems, causing odd behavior in the Axxess and CTI applications.

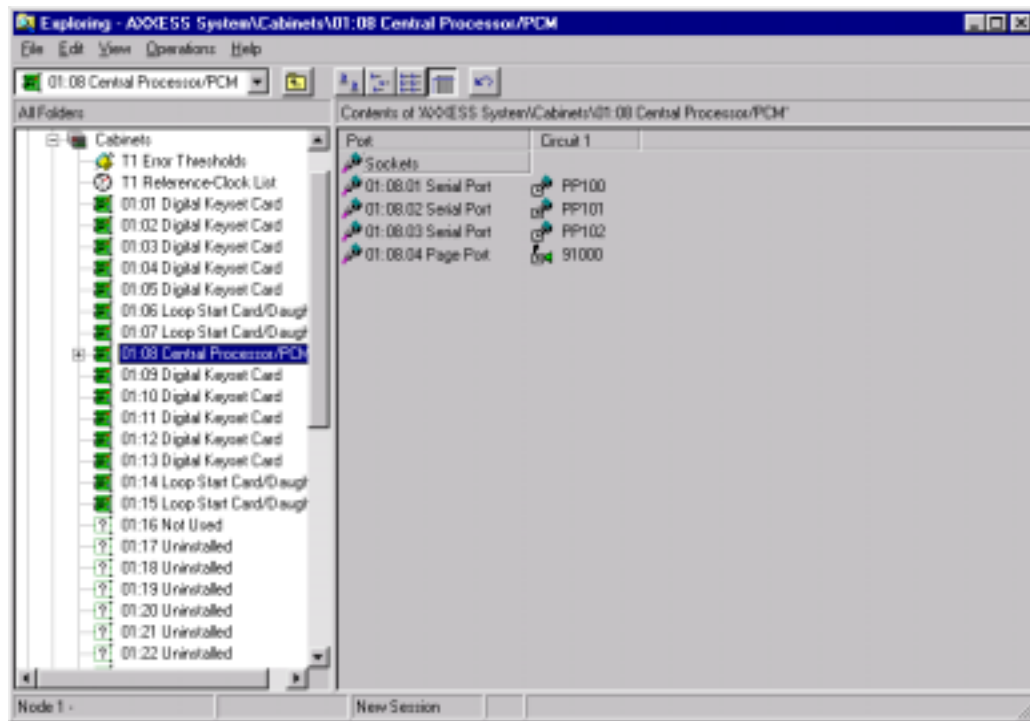
### Configuring the Axxess

- Open Database Programming and connect to your Axxess.

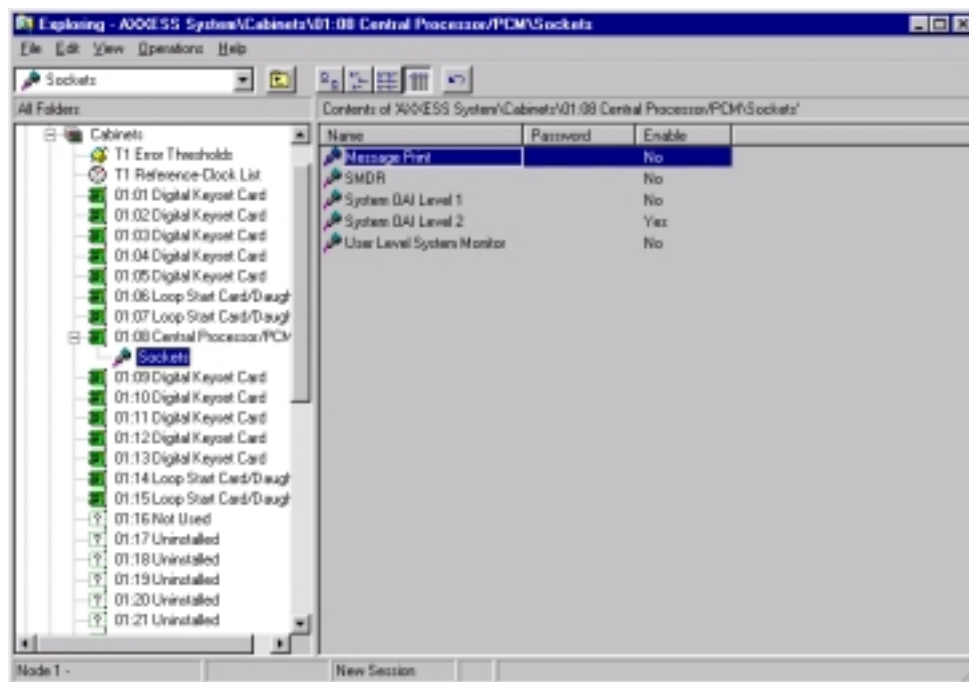


## Configuring the Axxess (cont.)

- Open the Cabinets container, and highlight your primary CPU card.



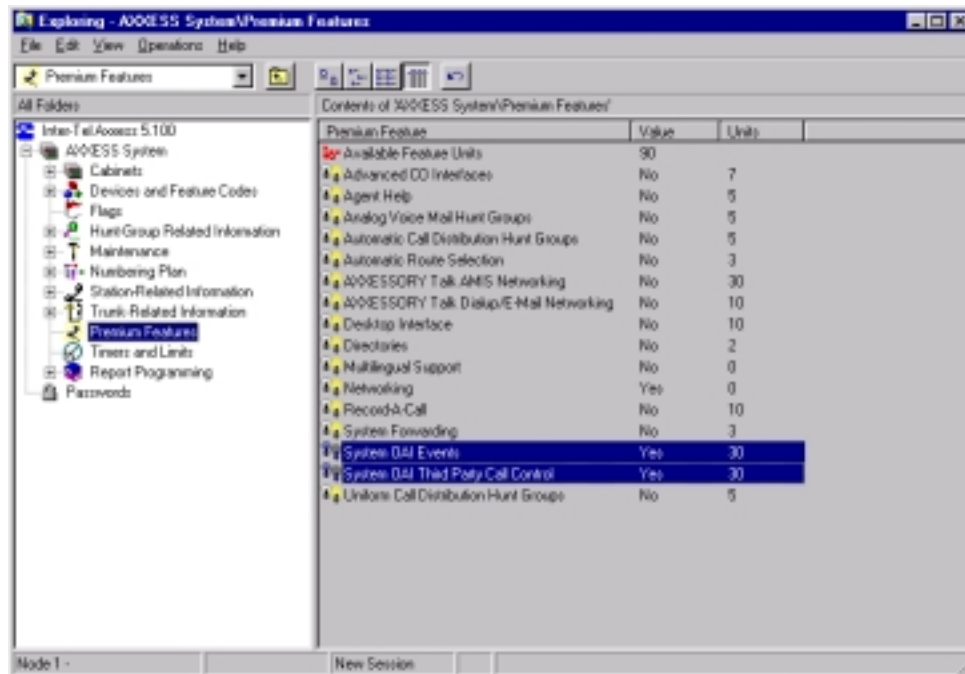
- Open the Sockets container



- Enable System OAI Level 2

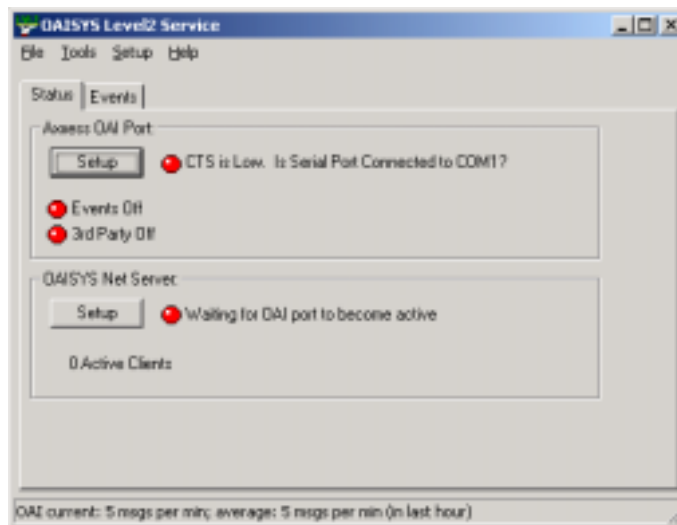
## Configuring the Axxess (cont.)

- Check to make sure you have the appropriate Features enabled – You must have System Level Events and 3<sup>rd</sup> Party Call Control enabled.



## Configuring Net Server

- Right-click the LVL2OAI item in the Net Server Services tab. Choose 'Show Service Window.'
- Click the Axxess OAI Port Setup button.



## Configuring Net Server (cont.)

- Select Unifier from the drop down list.

The screenshot shows a dialog box titled "OAI Port Setup". It has a "Port Setup" tab. Under the "OAI Port:" label, there is a dropdown menu with "Unifier" selected. Below this is a section titled "Unifier Port Settings:" which contains four text input fields: "Host Name:" with the value "testnt4", "Host Port:" with the value "4000", "Login Name:" with the value "OAISYS Level2 Service", and "Password:" which is empty. At the bottom right of the dialog are "OK" and "Cancel" buttons.

- Fill in the appropriate information:

**Host Name:** can be the IP address of the NT CPU, the PC Name, or the full TCP/IP domain name. In this example, we are using the PC NetBIOS name 'TESTNT4.' We could also use '192.168.0.22' Please note: This is the name or address of the **Listening Socket** on the NT CPU. If you are not sure what this is, please see the Listening Socket section below.

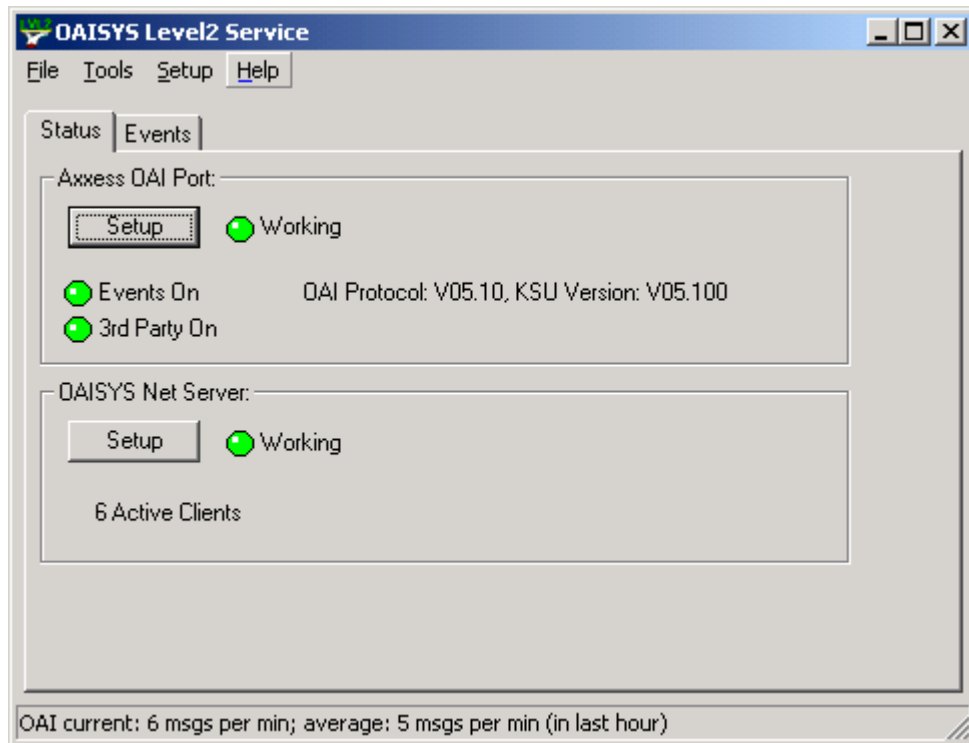
**Host Port:** should always be 4000, unless you specified a different port in the NT CPU configuration.

**Login Name:** should be left as OAISYS Level2 Service, but any name will suffice.

**Password:** may be left blank.

## Configuring Net Server (cont.)

- Click OK to complete the change.



## Listening Socket

The NT CPU should have two network cards installed. One is to connect the NT CPU to the organization's regular data network. The other is dedicated to a private connection to the Axxess CPU card – no other devices should be present on this subnet.

The Listening Socket is the IP address of network card connected to the regular data network.

You can set or check this address using the Inter-Tel Call Processing Configuration Utility.

